

ENDLESS APPLICATION POSSIBILITIES

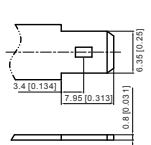
Landport Lithium LiFePO4 is suitable for a variety of cyclic applications in the marine and recreation industry including boats, whisper boats, campers and caravans. In addition, this series is suitable for applications in various industries including security (alarm systems and emergency lighting), medical & healthcare (mobility scooters, patient lifts, stair lifts and bath lifts), industrial (cleaning) equipment and measuring equipment. Available in a range of 12.8V batteries from 7.5Ah to 100Ah.



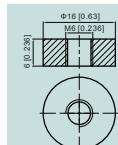
MODELS AND SPECIFICATIONS

Article number	Voltage (V)	Capacity (Ah)	Energy (Wh)	Length (mm)	Width (mm)	Height (mm)	Total height (mm)	Layout	Terminal
LFP POW12-16	12.8	16	204.8	168	128	97	97		TBAR
LFP POW12-22	12.8	22	281.6	168	128	123	123		TBAR
LFP V12-007,5 T2	12.8	7.5	96	151	65	94	94		T2
LFP V12-012 T2	12.8	12	153.6	151	98	93	93		T2
LFP V12-020 T12	12.8	20	256	181	77	167	167		T12
LFP V12-040 T6	12.8	40	512	197	166	170	170		T6
LFP V12-100BT2 T11	12.8	100	1280	330	173	212	212		T11
LFP V12-100LBT T11	12.8	100	1280	355	176	190	190		T11
LFP V12-125LBT T11	12.8	125	1600	355	175	190	190		T11
LFP V12-150 T11	12.8	150	1920	330	173	212	212	-	T11
LFP V24-050BT T11	25.6	50	1280	330	172	214	220		T11

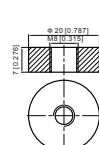
T2



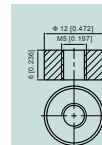
T6



T11



T12



CARE & MAINTENANCE

Maintain the lithium LiFePO4 series with a special lithium battery charger. We have a suitable and reliable lithium battery charger available for every lithium battery. Due to the large differences in battery technology, do not use a battery charger for lead-acid batteries for this series. Available in 3 models.

Model	Specs	Description	Battery range (Ah)
PC12-03	14.6V 3A	lithium battery charger	6-20
PC12-10	14.6V 10A	lithium battery charger	20-40
PC12-20	14.6V 20A	lithium battery charger	40-100



LFP SERIES

LITHIUM LiFePO_4 BATTERIES

FULLY-FLEDGED LEAD ACID BATTERY REPLACEMENT

MAXIMUM CYCLE LIFE. SAFEST LITHIUM TECHNOLOGY. SMART BMS.

The LFP series is a full-fledged lead acid battery replacement with all the advantages of LiFePO_4 technology. This lithium battery ensures maximum safety and long service life even with regular deep discharge. The LiFePO_4 technology enables an extremely long cycle life, which makes this battery the ideal traction battery. In addition, LiFePO_4 technology offers a significant weight reduction, enormous energy reserves and stable voltage/OCV even under extreme loads.



FEATURES

- EXCELLENT PERFORMANCE
- LONG CYCLE LIFE
- SAFEST LITHIUM TECHNOLOGY
- INTEGRATED BMS
- INTEGRATED BLUETOOTH MONITORING*
- ULTRA-LIGHT WEIGHT
- VERY LOW SELF-DISCHARGE RATE

power on command



LFP SERIES

LITHIUM LiFePO4 BATTERIES

A FULLY-FLEDGED LEAD ACID BATTERY REPLACEMENT

This lithium battery is a full-fledged lead acid battery replacement with all the advantages of LiFePO4 technology. This LiFePO4 battery ensures maximum safety and long service life even with regular deep discharge. The technology enables an extremely long cycle life, which makes this battery the ideal traction battery.

Lithium LiFePO4 is suitable for replacing cyclic lead acid batteries such as AGM or GEL. The battery is only suitable for 12V installations. Parallel and series connection of batteries is possible under certain conditions. Be informed in advance by our experts.



THE SAFEST LITHIUM TECHNOLOGY

The series is based on lithium iron phosphate technology (LiFePO4), simply the safest lithium technology available. It enables an extremely long cycle life and offers significant weight reduction, enormous energy reserves and stable tension even under extreme loads.

The integrated battery management system (BMS) constantly monitors the status of the battery and protects it from overcharging, overvoltage and overtemperature. This prevents the battery from failing prematurely due to environmental influences or incorrect use in advance.





UNIQUE FEATURES

- **EXCELLENT PERFORMANCE**
Extreme cyclic performance, the perfect traction battery.
- **LONG CYCLE LIFE**
Maximum cycle life with over 2000 cycles, even with regular deep discharge.
- **SAFEST LITHIUM TECHNOLOGY**
No gases, no risk of explosion or fire. 100% maintenance free.
- **INTEGRATED BMS**
Protection against short circuit, overcharging and deep discharge.
- **INTEGRATED BLUETOOTH MONITORING***
For actual battery status.
- **ULTRA-LIGHT WEIGHT**
About 53% lighter than comparable lead-acid battery.
- **VERY LOW SELF-DISCHARGE RATE**
Only about 2% per month when stored or not used.

	Lithium LiFePO4 battery	Lead-acid battery
1.6 x Usable capacity	80%	50%
8 x Cycle life at 80% depth of discharge (DoD)	≥2000	250
10 x Cycle life at 50% depth of discharge (DoD)	≥5000	500
-15 kg Weight (reference model 100Ah)	13.5	28.5

FOLLOW YOUR BATTERY STATUS*

With the integrated bluetooth monitoring you always have insight into the status of the battery. Download the app Bluetooth Li on your smartphone or tablet. Connect this to the battery via bluetooth and the app shows real-time information about:

- **BATTERY STATE OF CHARGE IN % (SOC)**
- **BATTERY VOLTAGE**
- **CHARGE / DISCHARGE CURRENT**
- **BATTERY TEMPERATURE**
- **NUMBER OF CHARGE / DISCHARGE CYCLES**



*only available for LFP12-100BT (100Ah)