

# LFP SERIES

## LITHIUM $\text{LiFePO}_4$ BATTERIES

### FULLY-FLEDGED LEAD ACID BATTERY REPLACEMENT

**MAXIMUM CYCLE LIFE. SAFEST LITHIUM TECHNOLOGY. SMART BMS.**

The LFP series is a full-fledged lead acid battery replacement with all the advantages of  $\text{LiFePO}_4$  technology. This lithium battery ensures maximum safety and long service life even with regular deep discharge. The  $\text{LiFePO}_4$  technology enables an extremely long cycle life, which makes this battery the ideal traction battery. In addition,  $\text{LiFePO}_4$  technology offers a significant weight reduction, enormous energy reserves and stable voltage/OCV even under extreme loads.



#### FEATURES

- EXCELLENT PERFORMANCE
- LONG CYCLE LIFE
- SAFEST LITHIUM TECHNOLOGY
- INTEGRATED BMS
- INTEGRATED BLUETOOTH MONITORING\*
- ULTRA-LIGHT WEIGHT
- VERY LOW SELF-DISCHARGE RATE

\*only available for LFP12-100BT (100Ah)



# LFP SERIES

## LITHIUM LiFePO4 BATTERIES

### A FULLY-FLEDGED LEAD ACID BATTERY REPLACEMENT

This lithium battery is a full-fledged lead acid battery replacement with all the advantages of LiFePO4 technology. This LiFePO4 battery ensures maximum safety and long service life even with regular deep discharge. The technology enables an extremely long cycle life, which makes this battery the ideal traction battery.

Lithium LiFePO4 is suitable for replacing cyclic lead acid batteries such as AGM or GEL. The battery is only suitable for 12V installations. Parallel and series connection of batteries is possible under certain conditions. Be informed in advance by our experts.

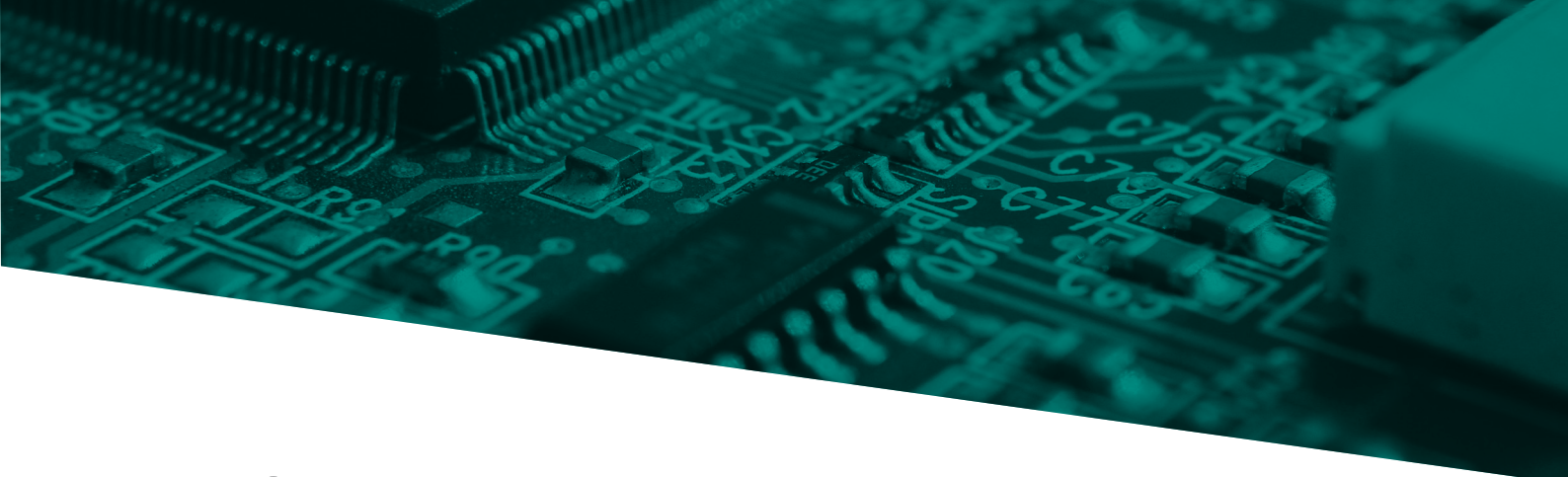


## THE SAFEST LITHIUM TECHNOLOGY

The series is based on lithium iron phosphate technology (LiFePO4), simply the safest lithium technology available. It enables an extremely long cycle life and offers significant weight reduction, enormous energy reserves and stable tension even under extreme loads.

The integrated battery management system (BMS) constantly monitors the status of the battery and protects it from overcharging, overvoltage and overtemperature. This prevents the battery from failing prematurely due to environmental influences or incorrect use in advance.





# UNIQUE FEATURES

- **EXCELLENT PERFORMANCE**  
Extreme cyclic performance, the perfect traction battery.
- **LONG CYCLE LIFE**  
Maximum cycle life with over 2000 cycles, even with regular deep discharge.
- **SAFEST LITHIUM TECHNOLOGY**  
No gases, no risk of explosion or fire. 100% maintenance free.
- **INTEGRATED BMS**  
Protection against short circuit, overcharging and deep discharge.
- **INTEGRATED BLUETOOTH MONITORING\***  
For actual battery status.
- **ULTRA-LIGHT WEIGHT**  
About 53% lighter than comparable lead-acid battery.
- **VERY LOW SELF-DISCHARGE RATE**  
Only about 2% per month when stored or not used.

	Lithium LiFePO4 battery	Lead-acid battery
1.6 x Usable capacity	80%	50%
8 x Cycle life at 80% depth of discharge (DoD)	≥2000	250
10 x Cycle life at 50% depth of discharge (DoD)	≥5000	500
-15 kg Weight (reference model 100Ah)	13.5	28.5

## FOLLOW YOUR BATTERY STATUS\*

With the integrated bluetooth monitoring you always have insight into the status of the battery. Download the app SMART-BMS on your smartphone or tablet. Connect this to the battery via bluetooth and the app shows real-time information about:

- **BATTERY STATE OF CHARGE IN % (SOC)**
- **BATTERY VOLTAGE**
- **CHARGE / DISCHARGE CURRENT**
- **BATTERY TEMPERATURE**
- **NUMBER OF CHARGE / DISCHARGE CYCLES**

\*only available for LFP12-100BT (100Ah)



# ENDLESS APPLICATION POSSIBILITIES

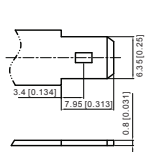
Landport Lithium LiFePO4 is suitable for a variety of cyclic applications in the marine and recreation industry including boats, whisper boats, campers and caravans. In addition, this series is suitable for applications in various industries including security (alarm systems and emergency lighting), medical & healthcare (mobility scooters, patient lifts, stair lifts and bath lifts), industrial (cleaning) equipment and measuring equipment. Available in a range of 12.8V batteries from 7.5Ah to 100Ah.



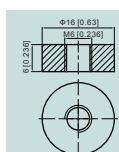
## MODELS AND SPECIFICATIONS

Model	Article number	Voltage (V)	Capacity (Ah)	Energy (Wh)	Length (mm)	Width (mm)	Height (mm)	Total height (mm)	Layout	Terminal
LFP12-7.5	LFP V12-007,5 T2	12,8	7,5	96	151	65	92	92		T2
LFP12-12	LFP V12-012 T2	12,8	12	153,6	152	99	96	96		T2
LFP12-20	LFP V12-020 T3	12,8	20	256	181	77	167	167		T12
LFP12-40	LFP V12-040 T6	12,8	40	512	197	165	170	170		T6
LFP12-75	LFP V12-075 T6	12,8	75	960	260	168	208	208		T6
LFP12-100BT	LFP V12-100BT T11	12,8	100	1280	330	173	212	212		T11

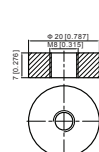
### T2



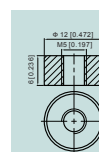
### T6



### T11



### T12



## CARE & MAINTENANCE

Maintain the lithium LiFePO4 series with a special lithium battery charger. We have a suitable and reliable lithium battery charger available for every lithium battery. Due to the large differences in battery technology, do not use a battery charger for lead-acid batteries for this series. Available in 3 models.

Model	Specs	Description	Battery range (Ah)
PC12-03	14.6V 3A	lithium battery charger	6-20
PC12-10	14.6V 10A	lithium battery charger	20-40
PC12-20	14.6V 20A	lithium battery charger	40-100

