



LP12-17 (12V 17.0Ah)

Specifications

Rated Voltage	12
Nominal Capacity (20Hr)	17.0Ah
Dimensions	Length 182 mm
	Width 77 mm
	Container Height 168 mm
	Total Height 168 mm
Approx. Weight	5.70 Kg (12.57lbs)
Terminal	T12
Layout	0
Container material	ABS
Rated Capacity (25°C)	17.0 Ah (20hr, 0.85A, 1.80V/cell)
	15.8 Ah (10hr, 1.58A, 1.80V/cell)
	14.3 Ah (5hr, 2.86A, 1.75V/cell)
	12.7 Ah (3hr, 4.24A, 1.75V/cell)
	10.5 Ah (1hr, 10.5A, 1.60V/cell)
Max. Discharge Current	255A (5s)
Internal Resistance (25°C)	Approx 16mΩ
Operating Temp. Range	Discharge: -15°C ~50°C (5~122°F)
	Charge: 0°C ~40°C (32~104°F)
	Storage: -15°C ~40°C (5~104°F)
Nominal Operating Temp. Range	25±3°C (77±5°F)
Cycle Use	Initial Charging Current less than 5.1A. Voltage 14.4V~15.0V at 25°C (77 °CF)Temp. Coefficient -30mV/°C
Standby Use	No Limit on Initial Charging Current Voltage 13.5V~13.8V at 25°C (77 °CF)Temp. Coefficient -20mV/°C
Effect Of Temp. To Capacity	40°C (104°F) 103%
	25°C (77°F) 100%
	0°C (32°F) 86%
Self Discharge	LP series batteries may be stored for up to 6 months at 25°C(77°F) and then a freshening charge is required. For higher temperatures the time interval will be shorter.



Description and Features

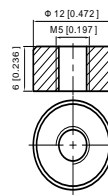
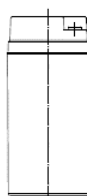
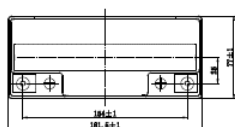
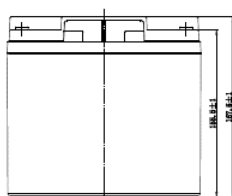
The LP Series AGM batteries have been specially developed to be widely applicable. These lead acid batteries with AGM technology are completely sealed and therefore 100% maintenance free and leak-proof. These batteries have a low self-discharge. The reliable and safe multipurpose batteries from the LP Series offer a long service life and can be used in various industries.

Features

- Absorbent Glass Mat technology
- Reliable and safe performance
- Long service life - 3-5 years in standby application (at 25°C)
- Suitable for multipurpose applications

Layout

Terminal



Constant Current Discharge Characteristics: A (25°C)

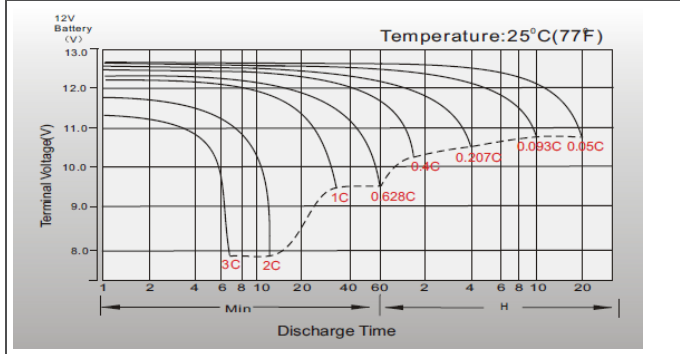
F.V/Time	5 Min	10 Min	15 Min	20 Min	30 Min	45 Min	1Hr	2 Hr	3 Hr	4 Hr	5 Hr	6 Hr	8 Hr	10 Hr	20 Hr
1.85V/cell	32.0	24.2	21.4	18.8	14.5	10.8	8.60	5.20	3.90	3.16	2.68	2.33	1.85	1.54	0.835
1.80V/cell	38.5	28.5	24.5	20.9	15.8	11.5	9.25	5.53	4.10	3.32	2.78	2.41	1.91	1.58	0.850
1.75V/cell	43.3	31.2	26.3	22.1	16.4	12.1	9.63	5.73	4.24	3.40	2.86	2.47	1.95	1.61	0.867
1.70V/cell	47.1	33.4	28.1	23.3	17.1	12.5	10.0	5.92	4.37	3.49	2.92	2.52	1.97	1.62	0.877
1.67V/cell	50.8	35.6	29.4	24.4	17.9	13.0	10.3	6.08	4.47	3.56	2.97	2.56	2.00	1.64	0.886
1.60V/cell	54.7	37.4	30.1	24.9	18.2	13.2	10.5	6.22	4.55	3.63	3.02	2.59	2.03	1.66	0.893

Constant Power Discharge Characteristics: Wpc (25°C)

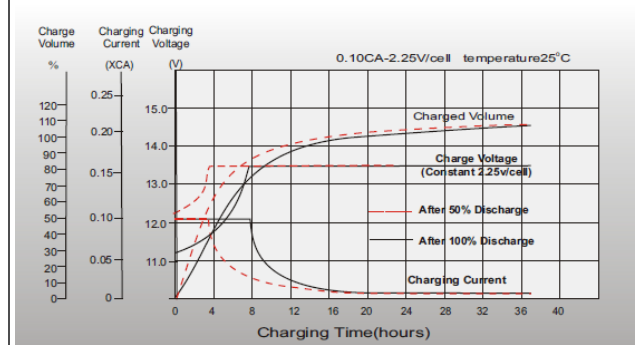
F.V/Time	5 Min	10 Min	15 Min	20 Min	30 Min	45 Min	1Hr	2 Hr	3 Hr	4 Hr	5 Hr	6 Hr	8 Hr	10 Hr	20 Hr
1.85V/cell	60.4	46.1	41.2	36.4	28.1	21.1	16.9	10.3	7.75	6.31	5.36	4.68	3.73	3.11	1.69
1.80V/cell	72.1	54.0	46.8	40.3	30.6	22.6	18.1	10.9	8.11	6.59	5.53	4.81	3.82	3.17	1.71
1.75V/cell	80.1	58.6	49.9	42.3	31.7	23.5	18.9	11.2	8.38	6.74	5.69	4.92	3.88	3.20	1.72
1.70V/cell	86.0	62.0	52.6	44.2	32.8	24.2	19.5	11.5	8.56	6.85	5.74	4.98	3.92	3.23	1.73
1.67V/cell	91.2	65.0	54.3	45.7	33.8	24.8	19.8	11.8	8.68	6.94	5.81	5.02	3.95	3.24	1.74
1.60V/cell	95.9	66.9	54.8	46.0	34.0	25.0	20.1	12.0	8.79	7.04	5.87	5.03	3.98	3.26	1.75



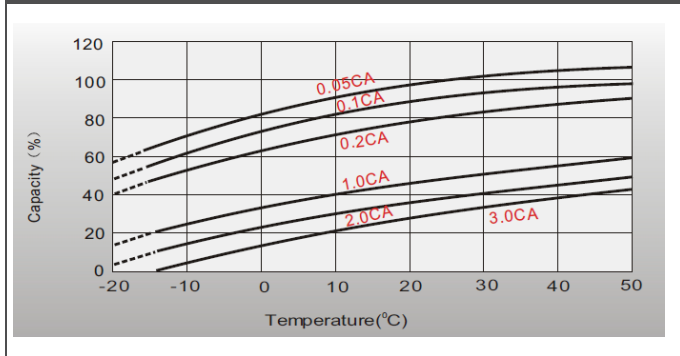
Discharge Characteristics



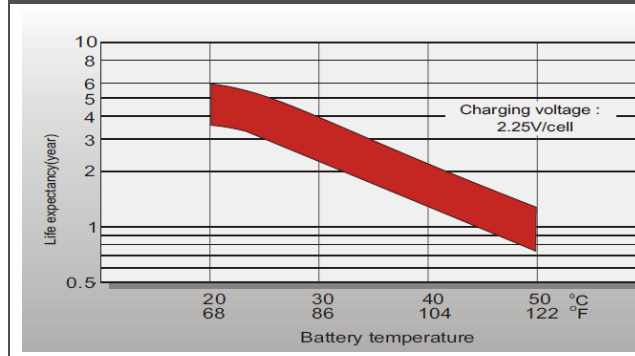
Float Charging Characteristics



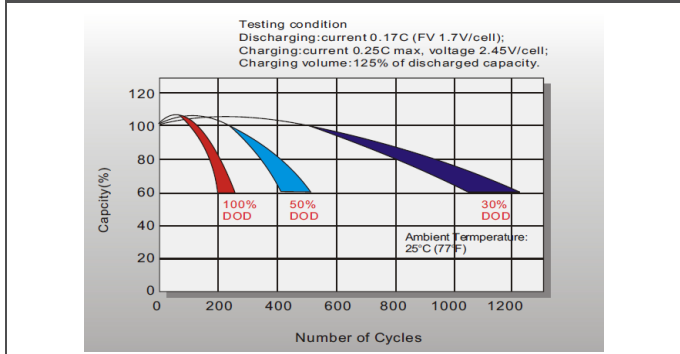
Temperature Effects In Relation To Battery Capacity



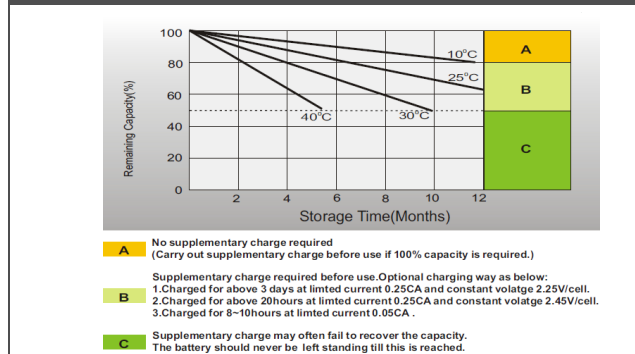
Effect of Temperature on Long Term Float Life



Cycle Life in Relation to Depth of Discharge



Self Discharge Characteristics



Applications

- All purpose
- Uninterruptable Power Supply (UPS)
- Electric Power System (EPS)
- Emergency backup power supply
- Emergency light
- Railway signal
- Aircraft signal
- Alarm and security system
- Electronic apparatus and equipment
- Communication power supply
- DC power supply
- Auto control system

(Note) All above information shall be changed without prior notice, Landport Batteries reserves the right to explain and update the latest information.