

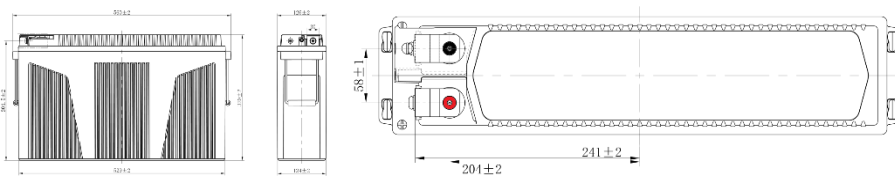
Item Code: LPCF12-170

Specifications

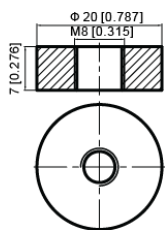
Nominal Voltage	12		
Approx. Weight	62.00 Kg (136.70lbs)		
Container Material	ABS		
Rated Capacity (25 °C)	164.40 Ah	120hr, 1.37A, 1.90V/cell	
	163.00 Ah	100hr, 1.63A, 1.90V/cell	
	173.52 Ah	24hr, 7.23A, 1.85V/cell	
	170.00 Ah	10hr, 17.00A, 1.80V/cell	
	103.20 Ah	1hr, 103.20A, 1.75V/cell	
Internal Resistance	Approx. 4.0m Ω		
Maximum Charging Current	0.3C		
Short-circuit current	1530A		
Operating Temp. Range	Discharge:	-20 °C ~ 55 °C	-4 °F ~ 131 °F
	Charge:	-20 °C ~ 40 °C	-4 °F ~ 104 °F
	Storage:	-20 °C ~ 50 °C	-4 °F ~ 122 °F
Nominal operating temp. Range	25±3°C (77±9°F)		
Effect of Temp. to Capacity	40 °C	104 °C	103%
	25 °C	77 °C	100%
	0 °C	32 °C	86%
Cycle Use	2.35V/Cell at 25°C		
	Temperature Compensation: -5mV/°C/Cell		
Self-Discharge	≤3.5% per month at 25°C (77°F)		

**Certificates / Standards**

- CE Certified
- Manufactured in certified production facilities IATF16949/ ISO45001 / ISO 9001 / ISO14001

**Dimensions****Layout**

Length	560 mm
Width	126 mm
Container Height	320 mm
Total Height	320 mm

Terminal

Terminal	T11
Terminal Torque	10 ~ 12 Nm
Layout	4



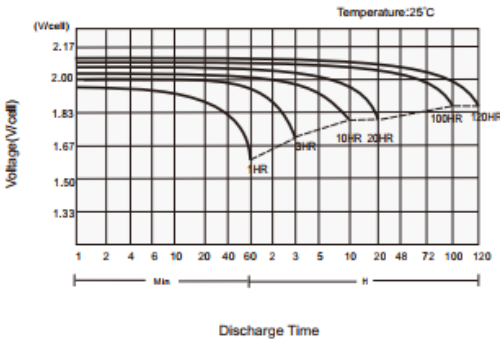
Constant Current Discharge Characteristics: Amperes (25 ° C)

F.V / Time	20 min	1h	2h	3h	5h	8h	10h	12h	20h	24h	36h	48h	72h	100h	200h
1.90V/Cell	148.8	83.3	50.9	36.9	24.6	16.9	14.5	12.5	7.54	6.42	4.35	3.32	2.25	1.63	1.37
1.85V/Cell	172.1	93.8	57.4	41.6	27.8	19.0	16.3	14.0	8.50	7.23	4.90	3.74	2.53	1.84	1.54
1.80V/Cell	181.2	100.4	59.1	42.9	28.9	19.8	17.0	14.6	8.83	7.52	5.09	3.87	2.63	1.91	1.60
1.75V/Cell	192.5	103.2	60.3	43.7	29.3	20.1	17.2	14.8	8.94	7.60	5.15	3.92	2.66	1.93	1.62

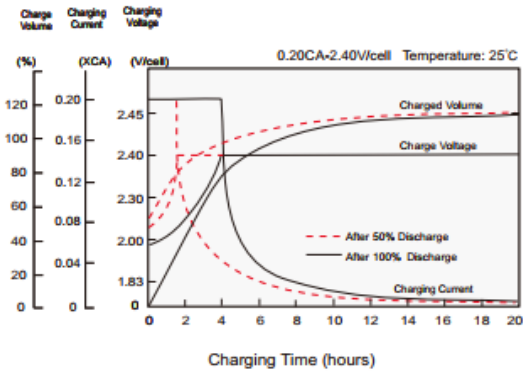
Constant Power Discharge Characteristics: Watts/ cell (25 ° C)

F.V / Time	20 min	1h	2h	3h	4h	5h	6h	7h	8h
1.90V/Cell	285.5	158.0	94.4	70.7	56.3	47.0	40.6	35.9	32.4
1.85V/Cell	334.1	178.0	106.4	79.6	65	52.9	45.8	40.5	36.5
1.80V/Cell	350.5	189.6	112.2	83.0	66.0	54.9	47.5	42.0	37.8
1.75V/Cell	365.6	194.2	114.2	84.2	66.9	55.6	48.0	42.3	37.9

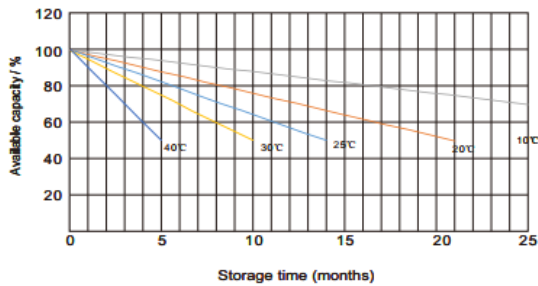
Discharge Characteristic



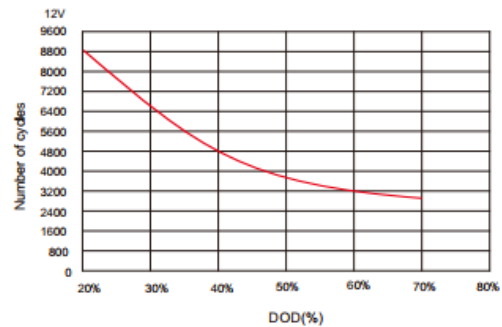
Charging Characteristics (Cycle Use)



Self-Discharge Characteristics



Cycle-life in Relation to Depth of Discharge



(Note) All above information shall be changed without prior notice, Landport Batteries reserves the right to explain and update the latest information.