

LPCG12-70H (12V 70Ah)



Since 1993

Item Code: NSA LPCG12-70H T6
EAN: 8717101005835

Specifications

Nominal Voltage	12		
Approx. Weight	22.90 Kg (50.48 lbs)		
Container Material	ABS		
Rated Capacity (25 °C)	75.00 Ah	20hr, 3.75A, 1.80V/cell	
	70.00 Ah	10hr, 7.00A, 1.80V/cell	
	60.00 Ah	5hr, 12.0A, 1.75V/cell	
Short-circuit current	1610A		
Internal Resistance	Approx. 9.40m Ω		
Operating Temp. Range	Discharge:	-20 °C ~ 55 °C	-4 °F ~ 131 °F
	Charge:	0 °C ~ 40 °C	32 °F ~ 104 °F
	Storage:	-20 °C ~ 50 °C	-4 °F ~ 122 °F
Nominal operating temp. Range	25±3°C (77±5°F)		
Effect of Temp. to Capacity	40 °C	104 °C	103%
	25 °C	77 °C	100%
	0 °C	32 °C	86%
Maximum Charging Current	13.50A		
Cycle Use	Voltage 14.4V~14.7V at 25°C (77 °F) Temp. Coefficient -30mV/°C		
Self-Discharge	≤3% per month at 25°C (77°F)		
Design life	10/ 12 Years		



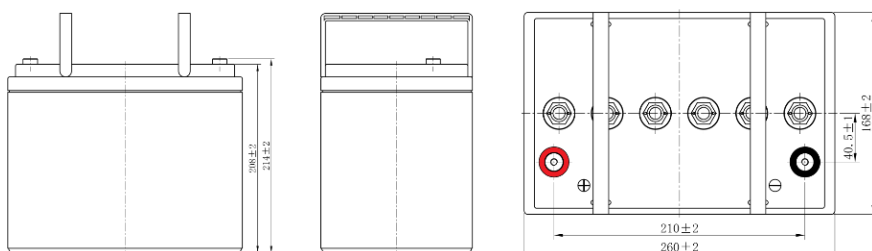
Certificates / Standards

- IEC 60896 Certified
- Classified as “Long Life” according to Eurobat
- CE Certified
- Manufactured in certified production facilities; IATF16949/ ISO 9001/ ISO 14001/ ISO 45001



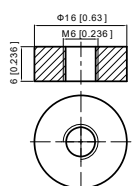
Dimensions

Layout



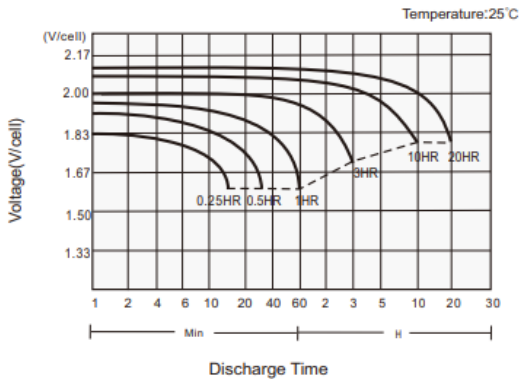
Length	260 mm
Width	168 mm
Container Height	208 mm
Total Height	214 mm

Terminal

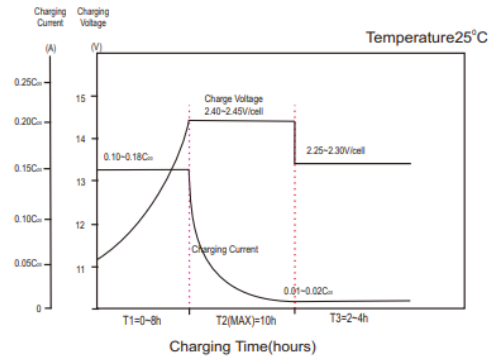


Terminal	T6
Terminal Torque	3.9-5.4 Nm
Layout	1

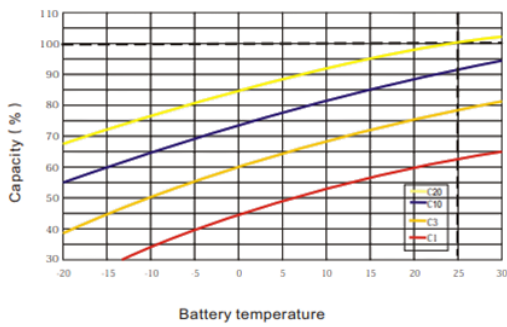
Discharge Characteristic



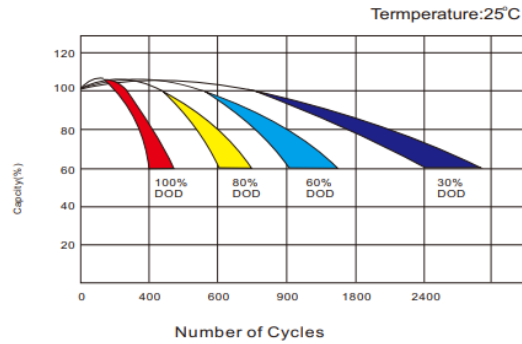
Charging Characteristics (Cycle Use)



Effects of Temperature on Capacity



Cycle-life in Relation to Depth of Discharge



(Note) All above information shall be changed without prior notice, Landport Batteries reserves the right to explain and update the latest information.