



YTX18L-BS (12V 17.7Ah)

Description

The motor battery YTX18L-BS, 12 volt, 17,7 Ah, is a starter battery with AGM technology. The YTX18L-BS is dry pre-charged and comes with a fitting acid pack. This lead-acid battery is, after filling and charging, 100% maintenance free and leak-proof. Can be installed in tilted position up to 45°. The YTX18L-BS is a real allrounder and suitable for seasonal use and short distances.

Performance

Rated Voltage	12
Nominal Capacity	17.7Ah (10hr)
CCA EN	300

Dimensions / Weight

Dimensions	Length	206 mm
	Width	89 mm
	Container Height	162 mm
	Total Height	162 mm
Net. Weight	7.18 Kg	
Weight acid	1.58 Kg	
Terminal	F	
Layout	0	

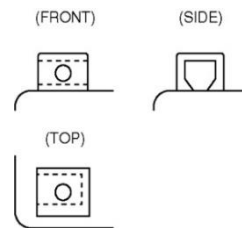
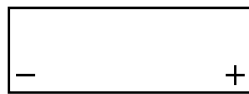


Features

- Absorbent Glass Mat technology
- Advanced starting power
- Excellent vibration resistant
- 100% maintenance free once activated

Layout

Terminal



(Note) All above information shall be changed without prior notice, Landport Batteries reserves the right to explain and update the latest information.