



LP MOTORCYCLE • DRY BATTERY

LB30CL-B (12V 30Ah)

DIN: 53036

06/06/2024

Description

The motorcycle battery LB30CL-B, 12 volt, 30 Ah, is a conventional starter battery which delivers reliable starting power for an excellent price. The LB30CL-B starter battery is dry pre-charged and comes with or without a separate acid pack and can only be installed in an upright position. This lead-acid LB30CL-B battery is suitable for almost any vehicle with basic power needs.

Performance

| | |
|------------------|-------------|
| Rated Voltage | 12 |
| Nominal Capacity | 30Ah (10hr) |
| CCA EN | 15 |

Dimensions / Weight

| | | |
|-------------|------------------|---------|
| Dimensions | Length | 165 mm |
| | Width | 130 mm |
| | Container Height | 192 mm |
| | Total Height | 192 mm |
| Net. Weight | | 8.08 Kg |
| Weight acid | | 2.23 Kg |
| Terminal | | F |
| Layout | | 15 |

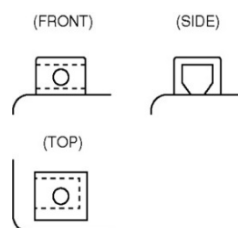
Features

- Conventional battery
- Robust technology
- Reliable starting power



Layout

Terminal



(Note) All above information shall be changed without prior notice, Landport Batteries reserves the right to explain and update the latest information.