



LP MOTORCYCLE • DRY BATTERY

LB4L-A (12V 4Ah)

DIN: 50413

13/04/2023

Description

The motorcycle battery LB4L-A, 12 volt, 4 Ah, is a conventional starter battery which delivers reliable starting power for an excellent price. The LB4L-A starter battery is dry pre-charged and comes with a separate acid pack and can only be installed in an upright position. This lead-acid LB4L-A battery is suitable for almost any vehicle with basic power needs.

Performance

Rated Voltage	12
Nominal Capacity	4Ah (10hr)
CCA EN	50

Dimensions / Weight

Dimensions	Length	120 mm
	Width	70 mm
	Container Height	92 mm
	Total Height	92 mm
Net. Weight	1.85 Kg	
Weight acid	0.42 Kg	
Terminal	F	
Layout	18	

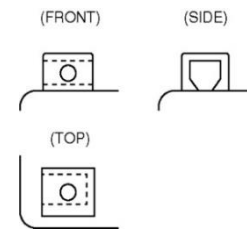
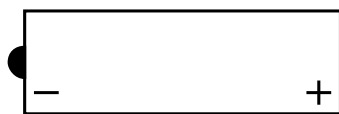


Features

- Conventional battery
- Robust technology
- Reliable starting power

Layout

Terminal



(Note) All above information shall be changed without prior notice, Landport Batteries reserves the right to explain and update the latest information.