



LP MOTORCYCLE • DRY BATTERY

# LB4L-B (12V 4Ah)

DIN: 50412

13/04/2023

## Description

The motorcycle battery LB4L-B, 12 volt, 4 Ah, is a conventional starter battery which delivers reliable starting power for an excellent price. The LB4L-B starter battery is dry pre-charged and comes with a separate acid pack and can only be installed in an upright position. This lead-acid LB4L-B battery is suitable for almost any vehicle with basic power needs.

## Performance

|                  |            |
|------------------|------------|
| Rated Voltage    | 12         |
| Nominal Capacity | 4Ah (10hr) |
| CCA EN           | 50         |

## Dimensions / Weight

|             |                  |        |
|-------------|------------------|--------|
| Dimensions  | Length           | 120 mm |
|             | Width            | 70 mm  |
|             | Container Height | 92 mm  |
|             | Total Height     | 92 mm  |
| Net. Weight | 1.85 Kg          |        |
| Weight acid | 0.42 Kg          |        |
| Terminal    | F                |        |
| Layout      | 15               |        |

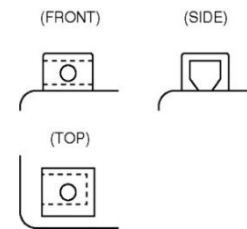
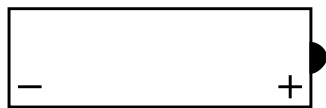


## Features

- Conventional battery
- Robust technology
- Reliable starting power

## Layout

## Terminal



(Note) All above information shall be changed without prior notice, Landport Batteries reserves the right to explain and update the latest information.