



LP MOTORCYCLE • GEL BATTERY

LB16B (12V 19Ah)

DIN: 51912

15/03/2023

Description

The motor battery LB16B, 12 volt, 19 Ah, is a starter battery with gel technology. The LB16B starter battery is already factory activated (filled and charged) and therefore ready to use. This gel battery is 100% leak-proof and can be installed in tilted position up to 90°. The LB16B delivers more starting power than a conventional battery and is suitable for the latest motorcycles and powersport vehicles.

Performance

Rated Voltage	12
Nominal Capacity	19Ah (10hr)
CCA EN	250

Dimensions / Weight

Dimensions	Length	176 mm
	Width	100 mm
	Container Height	157 mm
	Total Height	157 mm
Net. Weight	6.3 Kg	
Weight acid	2.24 Kg	
Terminal	F	
Layout	1	

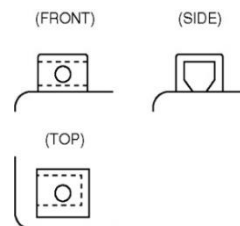


Features

- Gel technology
- Superior starting power
- Superior vibration resistant
- Very low self-discharge
- 100% maintenance free
- Factory activated, ready to use!

Layout

Terminal



(Note) All above information shall be changed without prior notice, Landport Batteries reserves the right to explain and update the latest information.