



LP MOTORCYCLE • GEL BATTERY

## LTX14AH-3 (12V 14Ah)

DIN: 51498

02/04/2025

### Description

The motor battery LTX14AH-3, 12 volt, 14 Ah, is a starter battery with gel technology. The LTX14AH-3 starter battery is already factory activated (filled and charged) and therefore ready to use. This gel battery is 100% leak-proof and can be installed in tilted position up to 90°. The LTX14AH-3 delivers more starting power than a conventional battery and is suitable for the latest motorcycles and powersport vehicles.

### Performance

Rated Voltage	12
Nominal Capacity	14Ah (10hr)
CCA EN	250

### Dimensions / Weight

Dimensions	Length 134 mm
	Width 88 mm
	Container Height 166 mm
	Total Height 166 mm
Net. Weight	4.89 Kg
Terminal	F
Layout	0

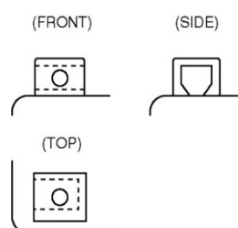
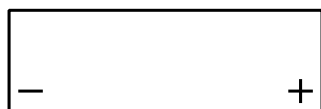
### Features

- Gel technology
- Superior starting power
- Superior vibration resistant
- Very low self-discharge
- 100% maintenance free
- Factory activated, ready to use!



### Layout

### Terminal



(Note) All above information shall be changed without prior notice, Landport Batteries reserves the right to explain and update the latest information.