



Description

The LFP01 is an OE-quality lithium battery specially developed for motor manufacturer KTM. Due to its ultra-lightweight (0,5 kg) and its unique sloping fit, the LFP01 fits perfectly in KTM (250 SX-F, 350 SX-F, 450 SX-F) and Husqvarna (FC 250, FC 350, FC 450) models from 2016-2017. The LFP01 is the best available replacement battery for the above named electric motocross dirt bikes.

Performance

Rated Voltage	12
Nominal Capacity	2Ah (10hr)
Energy	24Wh
CCA EN	120

Dimensions / Weight

Dimensions	Length 92 mm
	Width 52 mm
	Container Height 90 mm
	Total Height 90 mm
Net. Weight	0.50 Kg
Terminal	F
Layout	0

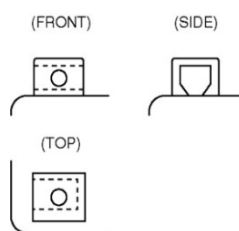
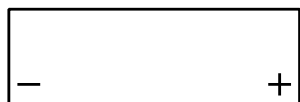
Features

- Lithium LiFePO4 technology
- Ultimate starting power
- Extreme cycle life (up to 2.000 charge cycles)
- Ultra-light weight (1/3 of similar lead-acid battery)
- Very low self-discharge
- Install in any position
- 100% maintenance free
- Ready to use!



Layout

Terminal



(Note) All above information shall be changed without prior notice, Landport Batteries reserves the right to explain and update the latest information.