



# LFP20 (12.8V 6Ah)

## Description

The motor battery LFP20, 12,8 volt, 6 Ah, is a starter battery with lithium LiFePO4 technology. The LFP20 is completely sealed, 100% maintenance free and ultra-safe in use. This motor battery is ready to use and can be installed in multiple positions, even 180°. The LFP20 is a little powerhouse of top quality and suitable for powersports vehicles where every gram or centimeter matters.

## Performance

Rated Voltage	12.8
Nominal Capacity	6Ah (10hr)
Energy	72Wh
CCA EN	360

## Dimensions / Weight

Dimensions	Length	165 mm
	Width	86 mm
	Container Height	130 mm
	Total Height	130 mm
Net. Weight	1.30 Kg	
Terminal	F	
Layout	25	

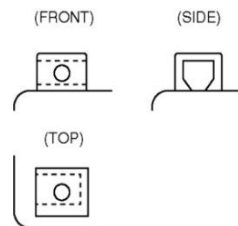


## Features

- Lithium LiFePO4 technology
- Ultimate starting power
- Extreme cycle life (up to 2.000 charge cycles)
- Ultra-light weight (1/3 of similar lead-acid battery)
- Very low self-discharge
- Install in any position
- 100% maintenance free
- Ready to use!

## Layout

## Terminal



(Note) All above information shall be changed without prior notice, Landport Batteries reserves the right to explain and update the latest information.