



### Description

The motor battery LFP5, 12,8 volt, 1,6 Ah, is a starter battery with lithium LiFePO4 technology. The LFP5 is completely sealed, 100% maintenance free and ultra-safe in use. This motor battery is ready to use and can be installed in multiple positions, even 180°. The LFP5 is a little powerhouse of top quality and suitable for powersports vehicles where every gram or centimeter matters.

### Performance

Rated Voltage	12.8
Nominal Capacity	1.6Ah (10hr)
Energy	19.2Wh
CCA EN	105

### Dimensions / Weight

Dimensions	Length	107 mm
	Width	56 mm
	Container Height	85 mm
	Total Height	85 mm
Net. Weight	0.40 Kg	
Terminal	F	
Layout	25	



### Features

- Lithium LiFePO4 technology
- Ultimate starting power
- Extreme cycle life (up to 2.000 charge cycles)
- Ultra-light weight (1/3 of similar lead-acid battery)
- Very low self-discharge
- Install in any position
- 100% maintenance free
- Ready to use!

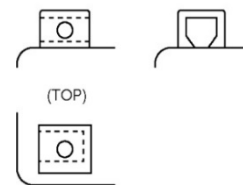
### Layout

### Terminal



(FRONT)

(SIDE)



(TOP)

(Note) All above information shall be changed without prior notice, Landport Batteries reserves the right to explain and update the latest information.