



# LFP9 (12.8V 3Ah)

### Description

The motor battery LFP9, 12,8 volt, 3 Ah, is a starter battery with lithium LiFePO4 technology. The LFP9 is completely sealed, 100% maintenance free and ultra-safe in use. This motor battery is ready to use and can be installed in multiple positions, even 180°. The LFP9 is a little powerhouse of top quality and suitable for powersports vehicles where every gram or centimeter matters.

### Performance

Rated Voltage	12.8
Nominal Capacity	3Ah (10hr)
Energy	36Wh
CCA EN	180

### Dimensions / Weight

Dimensions	Length	134 mm
	Width	65 mm
	Container Height	92 mm
	Total Height	92 mm
Net. Weight	0.70 Kg	
Terminal	F	
Layout	25	

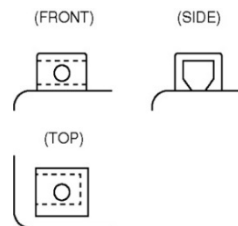
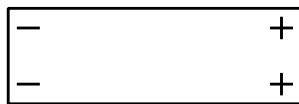


### Features

- Lithium LiFePO4 technology
- Ultimate starting power
- Extreme cycle life (up to 2.000 charge cycles)
- Ultra-light weight (1/3 of similar lead-acid battery)
- Very low self-discharge
- Install in any position
- 100% maintenance free
- Ready to use!

### Layout

### Terminal



(Note) All above information shall be changed without prior notice, Landport Batteries reserves the right to explain and update the latest information.