



LTX20CH-4 (12V 19Ah)

Description

The motor battery LTX20CH-4, 12 volt, 19 Ah, is a starter battery with AGM technology. The LTX20CH-4 is already factory activated (filled and charged) and therefore ready to use at delivery. This lead-acid battery is leak-proof and maintenance free. Can be installed in tilted position up to 90°. The LTX20CH-4 is a real allrounder and suitable for seasonal use and short distances.

Performance

Rated Voltage	12
Nominal Capacity	19Ah (10hr)
CCA EN	320

Dimensions / Weight

Dimensions	Length	150 mm
	Width	87 mm
	Container Height	163 mm
	Total Height	163 mm
Net. Weight	5.7 Kg	
Weight acid	- Kg	
Terminal	F	
Layout	1	

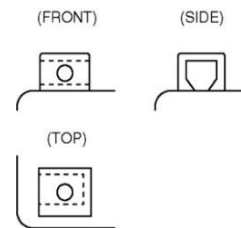
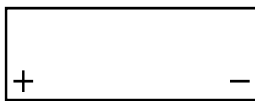


Features

- Absorbent Glass Mat technology
- Advanced starting power
- Excellent vibration resistant
- 100% maintenance free
- Factory activated, ready to use!

Layout

Terminal



(Note) All above information shall be changed without prior notice, Landport Batteries reserves the right to explain and update the latest information.